



42 Bryant Road, Strood, Kent, ME2 3ES

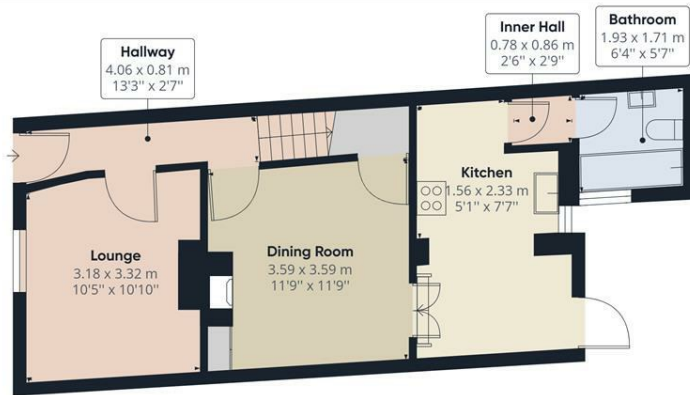
CHAIN FREE. PRICE GUIDE £250,000 - £260,000 VIRTUAL TOUR AVAILABLE* Period Terrace House * Three Separate Bedrooms * Two Reception rooms * Well Presented Throughout * Great First Time Buy * Easy Access To The Town And Station. Move straight into this period three bedroom home with two reception rooms, double glazing, Modern Kitchen and generous sunny aspect garden. Accommodation comprises, entrance door to hallway, stairs to first floor, doors to lounge and dining room. The lounge is front facing with attractive exposed brick chimney breast, ample room for large suite. Situated to the rear, the dining room is very generous, bright and airy, door to kitchen.

The kitchen is modern with good range of wall and base units, plenty of laminated work surfaces, access to rear garden and bathroom via small inner hallway. Bathroom is a modern white suite comprising panelled bath, low level WC and wash basin. On the first floor the landing provides access to three separate bedrooms with bedroom one the full width of the house, plenty of space for built in wardrobes.

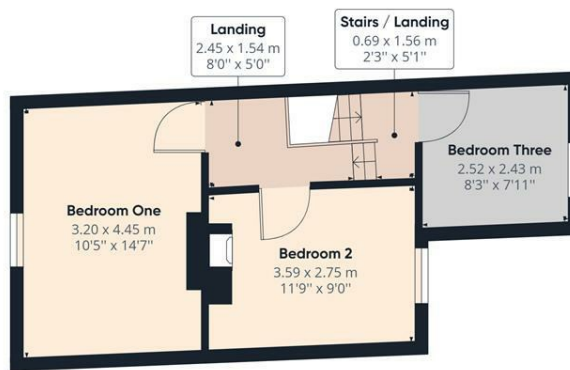
Outside the garden enjoys a sunny aspect, with patio, rest fairly level plot mainly laid to lawn around sixty to seventy feet long. ***This property is council Tax band B***

£250,000

- THREE SEPARATE BEDROOMS
- TWO RECEPTION ROOMS
- GOOD INTERNAL CONDITION
- PERFECT FOR TOWN AND STATION
- IDEAL FIRST TIME BUY
- DOUBLE GLAZING
- SOUGHT AFTER LOCATION
- CHAIN FREE
- MODERN KITCHEN
- IDEAL FOR LOCAL JUNIOR/INFANTS SCHOOL



Ground Floor Building 1



Floor 1 Building 1

Approximate total area⁽¹⁾
820.81 ft²
76.26 m²

(1) Excluding balconies and terraces

While every attempt has been made to ensure accuracy, all measurements are approximate, not to scale. This floor plan is for illustrative purposes only.

GIRAFFE360

